

# Lapbook

## LAPBOOK A7 N4



### Quick Start Guide



Please scan the QR Code to register warranty on your product  
Alternatively, Please visit [www.fusion5store.com/warranty](http://www.fusion5store.com/warranty)

# Lapbook

## II. IMPORTANT NOTICE

Congratulations on your purchase of  
new All in one LAPBOOK A7 N4

Any problem with this purchase?

Give us a chance to fix it!

Please send an email with your order  
ID and a description of your problem  
to [support@fusion5store.com](mailto:support@fusion5store.com)

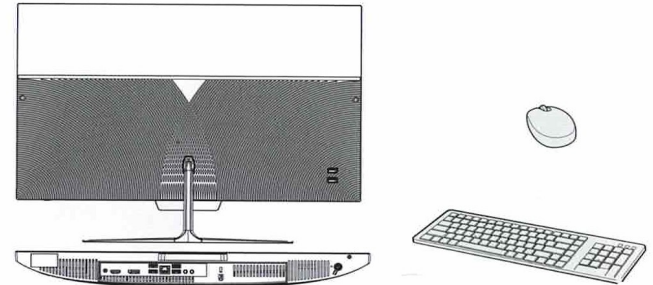
One of our team members will get in  
touch with you.

### Equipment start-up

Warning: When connecting the keyboard and mouse to the all in one, make sure that the computer and other equipment are in the off state, do not switch them on.

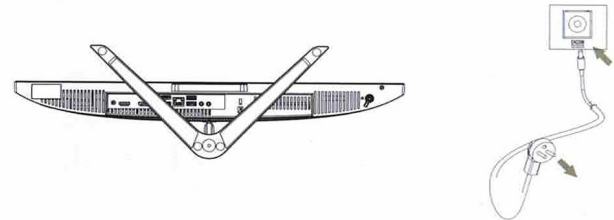
Connect the keyboard and mouse

PC can be connected with keyboard and mouse base on bluetooth.



Connect the all in one to the power outlet

Plug the power cord into the equipment plug and the other end into a 100~240V AC outlet and press the power button.

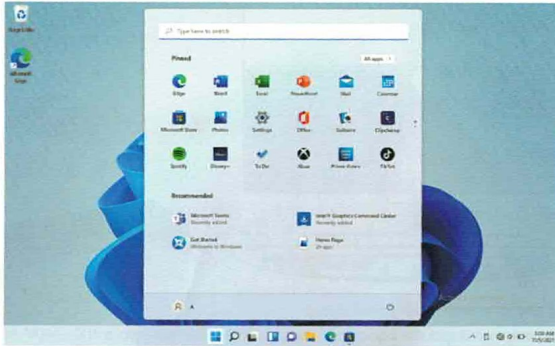


# Introduction to Desktop

## 1. Windows Desktop

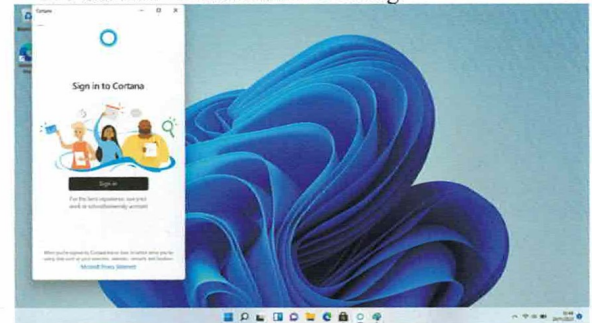
Windows 11 start image: On the start screen, you can see many programs fixed to the taskbar.

We strongly suggest logging into your Microsoft Account to enable all the features Windows 11 has to offer.



## 2. Cortana

Use Cortana for fast smart searching.

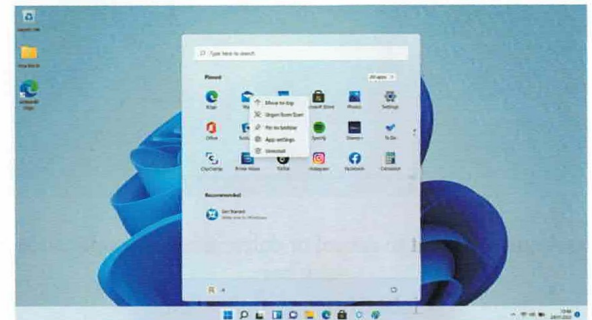


## 3. Introduction to Programs

Besides the application programs already fixed on the Taskbar, you can also fix other applications, programs, and folders to the Start Button/Taskbar.

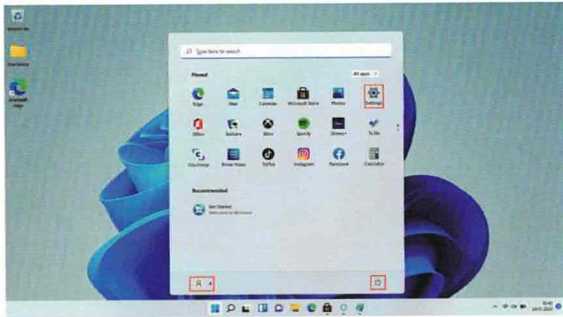
3.1. If you want to pin more programs on the start interface, see the operation in the image below.

In the start menu, right-click the application you want to pin and select "Pin to Start". You can also drag the application onto the "start" screen, as follows:





## 5. Multitasking interface



Power, Settings and Account.



Can Change account setting/Lock/Sign out.



Can let you set up the AIO.



Can Sleep/Shut down/Restart the AIO.


Search menu

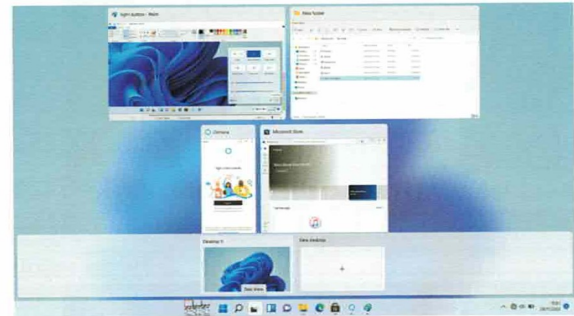


Action Center



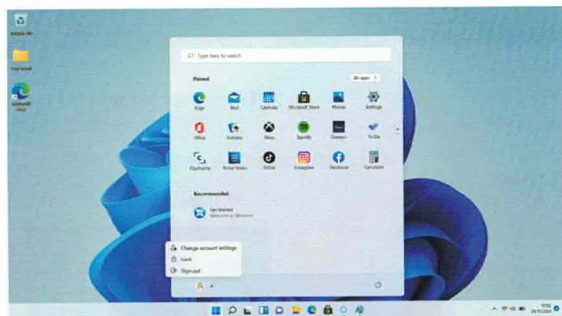
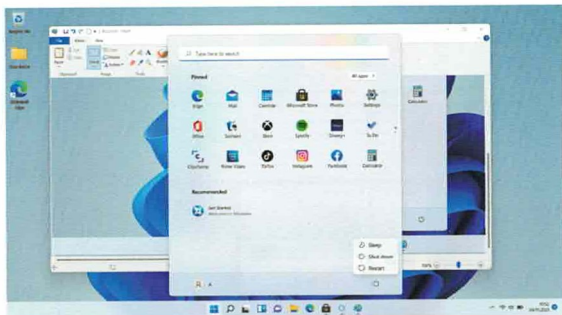
Action Center is a notification center that also allows for quick settings such as Wi-Fi, Bluetooth etc.

If you Click the Task View (or press the icon ), the running applications will be display. We can switch between and close different applications.



## Basic Operations

### 1.Sleep, Shut down and Restart



## V. Specifications

CPU	Intel Alder Lake-N100
Display	1920x1080 IPS
OS	Windows 11
Input method	USB or bluetooth Keyboard and mouse
DDR RAM	16GB
Capacity	512GB
Audio	AAC,FLAC,MP3,OGG,WAV,etc...(some need third party software support)
Video	3GP,MOV,MP4,MPG,AVI,etc...(some need third party software support)
E-book	Support
Wireless network	Support WIFI
Language	English (other languages need to be downloaded from Internet)
OTG	Support
Temperature	-10 °C to 45 °C

## **VII. FCC Statement**

Changes or modifications not expressly approved by the party responsible for compliance could void the user's authority to operate the equipment.

This equipment has been tested and found to comply with the limits for a Class B digital device, pursuant to Part 15 of the FCC Rules. These limits are designed to provide reasonable protection against harmful interference in a residential installation. This equipment generates uses and can radiate radio frequency energy and, if not installed and used in accordance with the instructions, may cause harmful interference to radio communications. However, there is no guarantee that interference will not occur in a particular installation. If this equipment does cause harmful interference to radio or television reception, which can be determined by turning the equipment off and on, the user is encouraged to try to correct the interference by one or more of the following measures:

- Reorient or relocate the receiving antenna.
- Increase the separation between the equipment and receiver.
- Connect the equipment into an outlet on a circuit different from that to which the receiver is connected.
- Consult the dealer or an experienced radio/TV technician for help

This device complies with part 15 of the FCC rules. Operation is subject to the following two conditions (1) this device may not cause harmful interference, and (2) this device must accept any interference received, including interference that may cause undesired operation.