

# Lapbook

## S15 N2 8G V3 LAPTOP

 Windows 11

Quick Start Guide



Please scan the QR Code to register warranty on your product  
Alternatively, Please visit [www.fusion5store.com/warranty](http://www.fusion5store.com/warranty)

# Lapbook


## Introduction

Thank you for your choosing the Lapbook S15 N2 8G V3 laptop. This guide serves to enable users to get to know and familiarize as soon as possible.

## Contents

<b>I. Precautions before Use.....</b>	<b>3</b>
<b>II. IMPORTANTE NOTICE.....</b>	<b>5</b>
<b>III. Key Layout and Definitions.....</b>	<b>6</b>
<b>IV. Descriptions of Ports.....</b>	<b>8</b>
<b>V. Introduction to Desktop.....</b>	<b>9</b>
1. Windows Desktop .....	9
2. Cortana .....	10
3. Introduction to Programs.....	10
4. Start Menu .....	12
5. Multitasking interface.....	13
<b>VI. Basic Operations.....</b>	<b>15</b>
1.Sleep, Shut down and Restart.....	15
<b>VII. FCC Statement.....</b>	<b>16</b>

## I. Precautions before Use

1. This production is suitable for use in non-tropic areas below 2,000 meters, and the mark  in the nameplate indicates the product is suitable for use in non-tropic areas.
2. Prevent the laptop from falling or being strongly impacted otherwise.
3. Do not use it for long periods of time in any environment where the air is too cold, too hot(>35°C), too humid or with too much dust. Do not expose the Laptop to direct sunlight.
4. Avoid using it in a strong magnetic or strong static environment as much as possible.
5. Once any water or other liquid splashes onto the Laptop PC, turn off the device immediately, do not use it and contact support.
6. Do not clean the laptop with any detergent containing chemical elements or other liquid to avoid causing damage due to corrosion and becoming damp. If cleaning is necessary, clean it with dry soft cloth tissue paper.
7. Our company shall not bear responsibilities for loss or deletion of material inside the machine caused due to abnormal software, hardware operation, maintenance, or any other accident.

8. Please be sure to back up any important material regularly to avoid any loss.
9. Please do not disassemble the Laptop by yourself; this will void the warranty.
10. This product supports a vast majority of mainstream brands of WIFI HOTSPOT network cards. The cases for WIFI HOTSPOT may be different. It is suggested that you test it to confirm its compatibility before purchasing.
11. Quick Use Guide and the relevant software shall be updated at any time. If anything is found to be inconsistent with the Quick Use Guide, the material object shall prevail.
12. The battery is not user serviceable.

## II. IMPORTANT NOTICE

Congratulations on your purchase of  
new Lapbook S15 N2 8G V3  
Laptop.

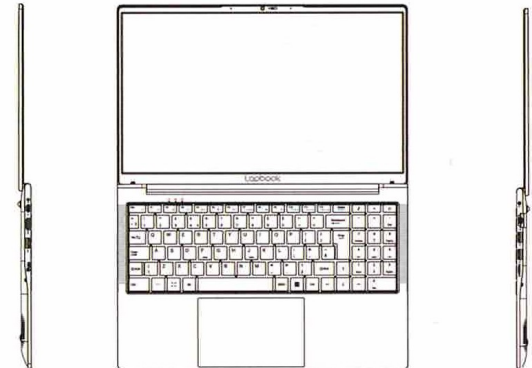
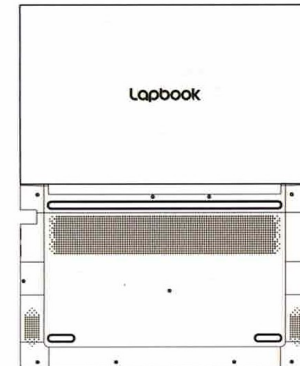
**Any problem with this purchase?**

Give us a chance to fix it!

Please send an email with your order  
ID and a description of your problem  
to [support@fusion5store.com](mailto:support@fusion5store.com)

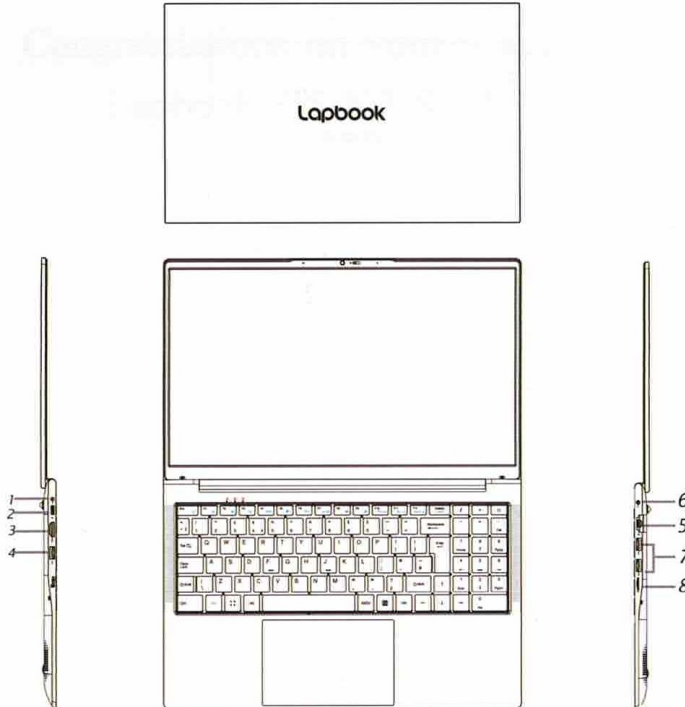
One of our team members will get in  
touch with you.

## III. Key Layout



## IV. Descriptions of Ports

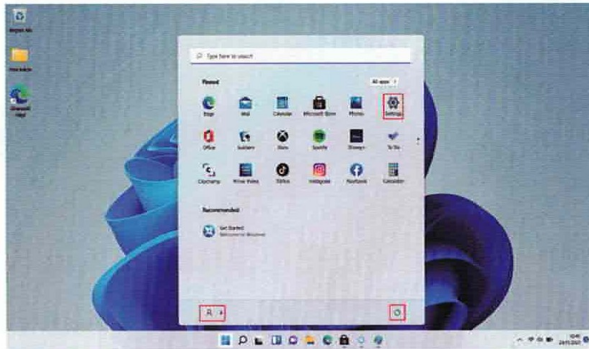
1. DC Port
2. Type C Port (Data Transfer Only)
3. HDMI Port
4. USB Port
5. Ethernet Port
6. Earphone Port
7. USB Port
8. Micro SD port (tf-card)







## 5. Multitasking interface



Power, Settings and Account.



Can Change account setting/Lock/Sign out.



Can let you set up the Laptop.



Can Sleep/Shut down/Restart the Laptop.


Search menu

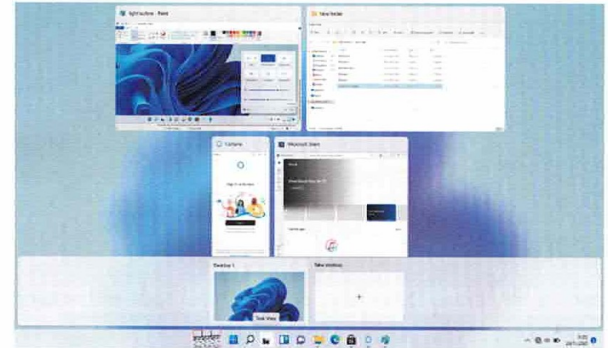


Action Center



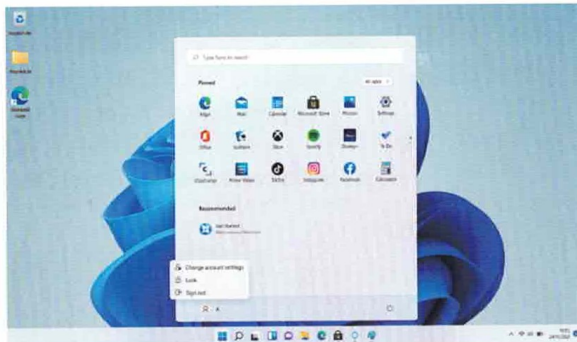
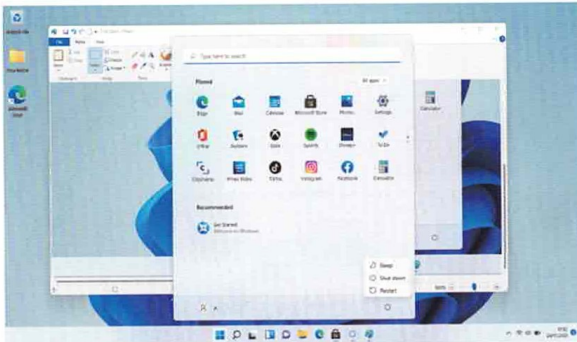
Action Center is a notification center that also allows for quick settings such as Wi-Fi, Bluetooth etc.

If you Click the Task View (or press the icon ), the running applications will be display. We can switch between and close different applications.



## VI. Basic Operations

### 1.Sleep, Shut down and Restart



### VII. FCC Statement

Changes or modifications not expressly approved by the party responsible for compliance could void the user's authority to operate the equipment.

This equipment has been tested and found to comply with the limits for a Class B digital device, pursuant to Part 15 of the FCC Rules. These limits are designed to provide reasonable protection against harmful interference in a residential installation. This equipment generates uses and can radiate radio frequency energy and, if not installed and used in accordance with the instructions, may cause harmful interference to radio communications. However, there is no guarantee that interference will not occur in a particular installation. If this equipment does cause harmful interference to radio or television reception, which can be determined by turning the equipment off and on, the user is encouraged to try to correct the interference by one or more of the following measures:

- Reorient or relocate the receiving antenna.
- Increase the separation between the equipment and receiver.
- Connect the equipment into an outlet on a circuit different from that to which the receiver is connected.
- Consult the dealer or an experienced radio/TV technician for help

This device complies with part 15 of the FCC rules. Operation is subject to the following two conditions (1) this device may not cause harmful interference, and (2) this device must accept any interference received, including interference that may cause undesired operation.