



# T90B+ Pro 128GB LAPTOP



Quick Start Guide



Please scan the QR Code to register warranty on your product  
Alternatively, Please visit [www.fusion5store.com/warranty](http://www.fusion5store.com/warranty)




# Introduction

Thank you for your choosing the Fusion5 **T90B+ Pro 128GB** laptop. This guide serves to enable users to get to know and familiarize as soon as possible.

## Contents

<b>I. Precautions before Use.....</b>	<b>3</b>
<b>II. FusionCharge™ PD 3.0.....</b>	<b>5</b>
<b>III. Key Layout and Definitions.....</b>	<b>6</b>
<b>IV. Descriptions of Ports.....</b>	<b>8</b>
<b>V. Introduction to Desktop.....</b>	<b>9</b>
1. Windows Desktop .....	9
2. Cortana .....	10
3. Introduction to Programs.....	10
4. Start Menu .....	12
5. Multitasking interface.....	13
<b>VI. Basic Operations.....</b>	<b>15</b>
1. Sleep, Shut down and Restart.....	15
<b>VII. FCC Statement.....</b>	<b>16</b>

# I. Precautions before Use

1. This production is suitable for use in non-tropic areas below 2,000 meters, and the mark  in the nameplate indicates the product is suitable for use in non-tropic areas.
2. Prevent the laptop from falling or being strongly impacted otherwise.
3. Do not use it for long periods of time in any environment where the air is too cold, too hot( $>35^{\circ}\text{C}$ ), too humid or with too much dust. Do not expose the Laptop to direct sunlight.
4. Avoid using it in a strong magnetic or strong static environment as much as possible.
5. Once any water or other liquid splashes onto the Laptop PC, turn off the device immediately, do not use it and contact support.
6. Do not clean the laptop with any detergent containing chemical elements or other liquid to avoid causing damage due to corrosion and becoming damp. If cleaning is necessary, clean it with dry soft cloth tissue paper.
7. Our company shall not bear responsibilities for loss or deletion of material inside the machine caused due to abnormal software, hardware operation, maintenance, or any other accident.

8. Please be sure to back up any important material regularly to avoid any loss.
9. Please do not disassemble the Laptop by yourself; this will void the warranty.
10. This product supports a vast majority of mainstream brands of 3G DONGLE network cards. The cases for 3G Dongle may be different. It is suggested that you test it to confirm its compatibility before purchasing.
11. Quick Use Guide and the relevant software shall be updated at any time. If anything is found to be inconsistent with the Quick Use Guide, the material object shall prevail.
12. The battery is not user serviceable.

## II. FusionCharge™ PD 3.0

"Charging your Device via FusionCharge™"



Congratulations! your new Fusion5 T90 128GB Laptop supports FusionCharge™ fast charging.

To take advantage of our latest FusionCharge technology, please purchase a FusionCharge compatible charger (sold separately) and connect your FusionCharge to your device via the FusionCharge PD3.0 Port.

Please only use a compatible FusionCharge charger as using an incorrect charger can cause irreversible damage and may void the warranty

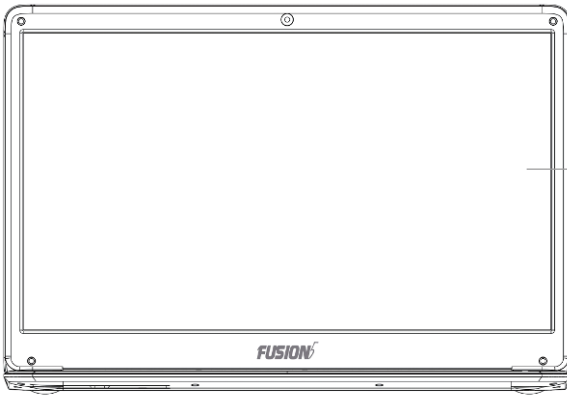
Please do not attempt to charge using two chargers at the same time."

Q. Why is the Fast charger not included as a standard in the purchase?

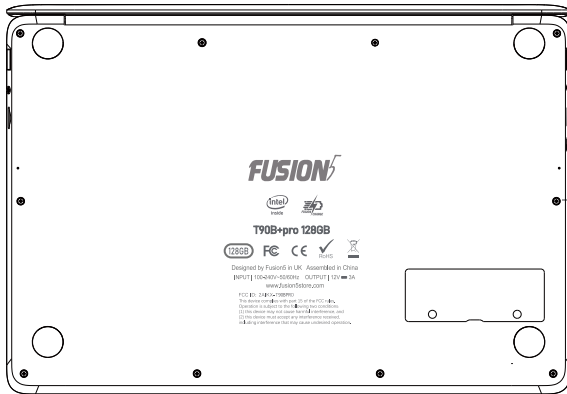
A. We always look at ways to reduce the overall cost of the final product so that our buyers get a premium product at an affordable price. Hence, we are not including Fast Chargers as a standard. However, this can be purchased separately from [www.fusion5store.com](http://www.fusion5store.com).

### III. Key Layout and Definitions



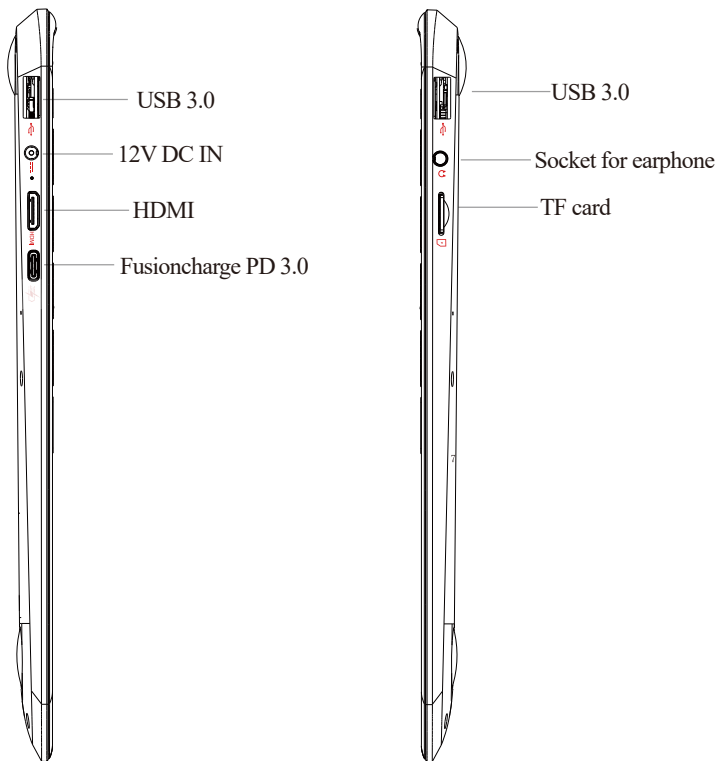


Top



Bottom

## IV. Descriptions of Ports

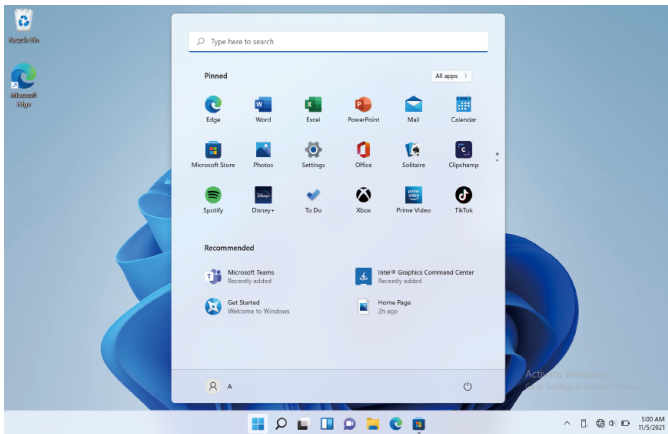


# V. Introduction to Desktop

## 1. Windows Desktop

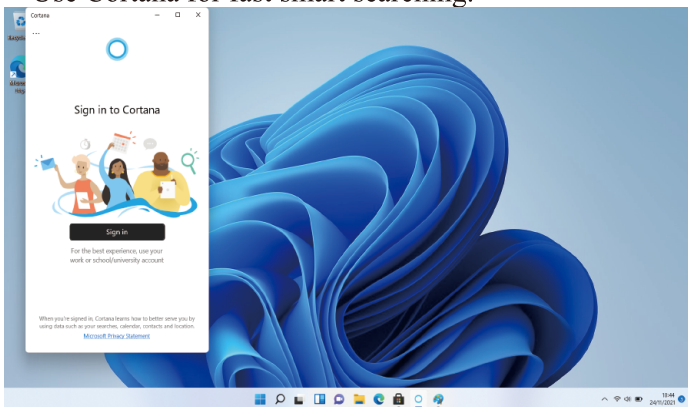
Windows 11 start image: On the start screen, you can see many programs fixed to the taskbar.

We strongly suggest logging into your Microsoft Account to enable all the features Windows 11 has to offer.



## 2. Cortana

Use Cortana for fast smart searching.

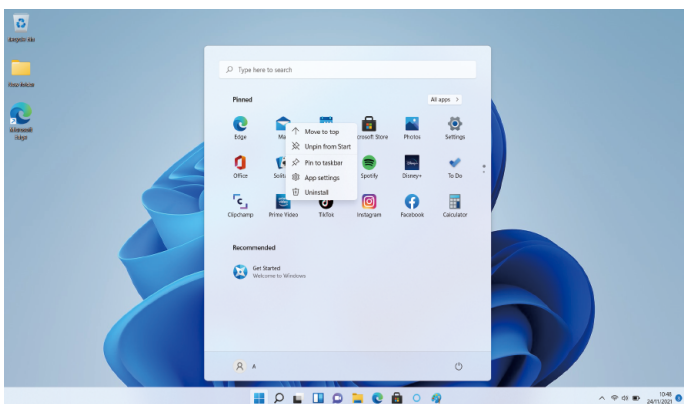


## 3. Introduction to Programs

Besides the application programs already fixed on the Taskbar, you can also fix other applications, programs, and folders to the Start Button/Taskbar.

**3.1.** If you want to pin more programs on the start interface, see the operation in the image below.

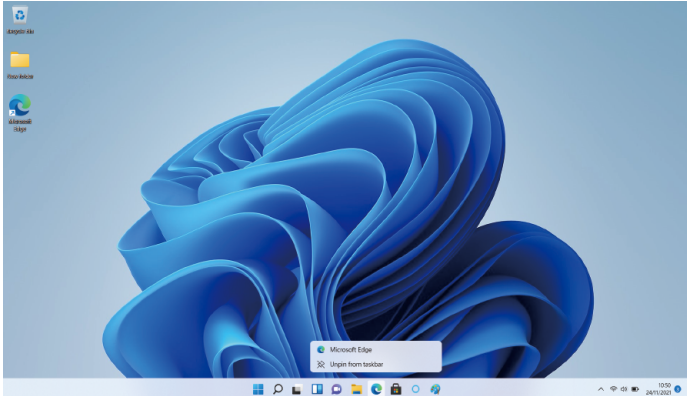
In the start menu, right-click the application you want to pin and select "Pin to Start". You can also drag the application onto the “start” screen, as follows:



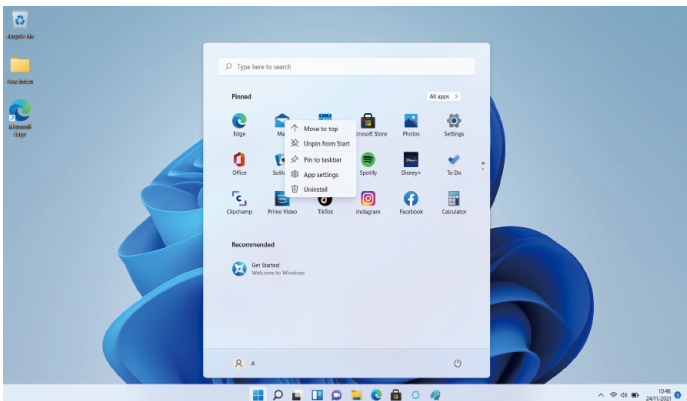
Conversely, if you want to cancel or delete a certain application in the start screen,

Right-Click the application,

Click the “Unpin from Start”



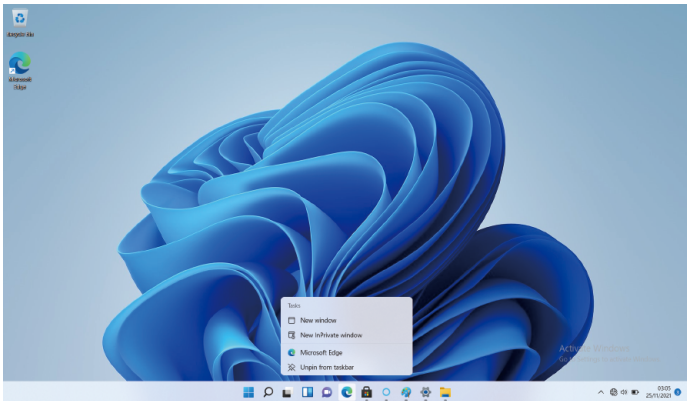
**3.2.** If you want to have more programs on the task bar, click the start menu, Right-Click the application, select more and ‘Pin to taskbar’



Conversely, if you want to cancel or delete a certain application in the task bar

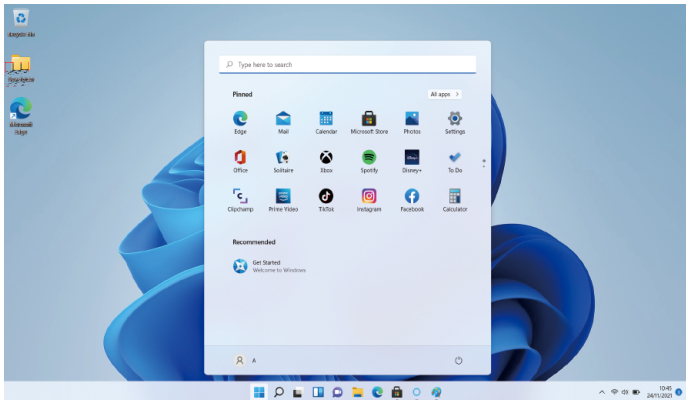
Right-Click the application,

Click the “Unpin this program from task bar”.

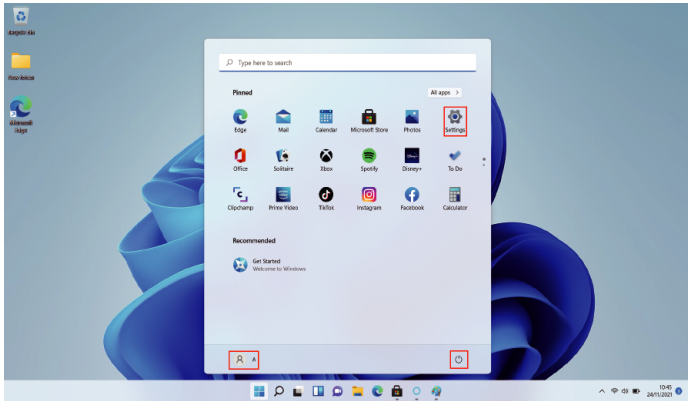


## 4. Start Menu

Start icon, Start Menu will display including: Start, Device, Setup, Share, and Search Program.



## 5. Multitasking interface



Power, Settings and Account.



Can Change account setting/Lock/Sign out.

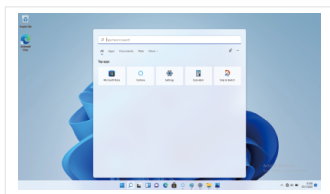


Can let you set up the Laptop.

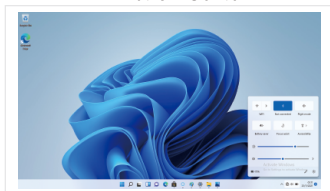


Can Sleep/Shut down/Restart the Laptop.


Search menu

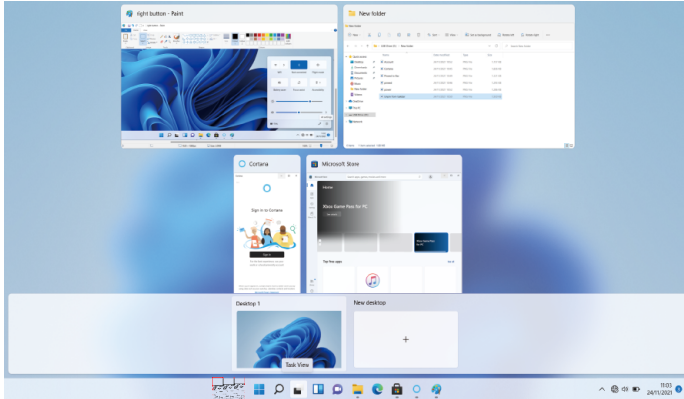


Action Center



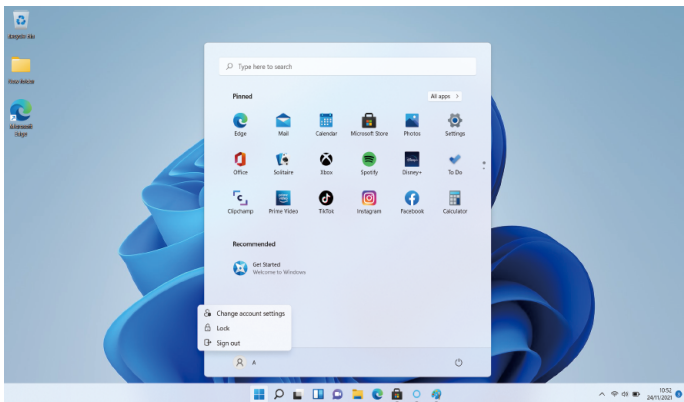
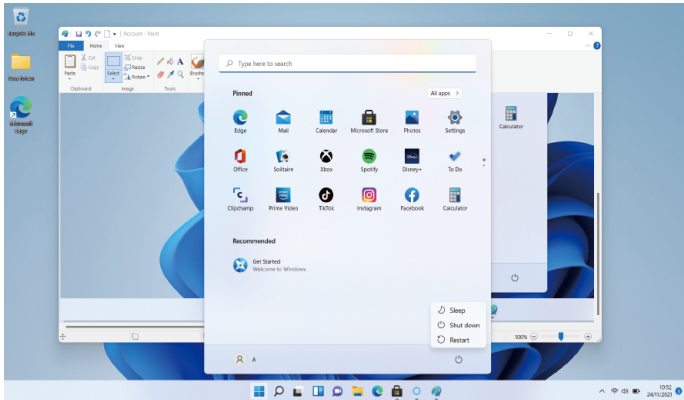
Action Center is a notification center that also allows for quick settings such as Wi-Fi, Bluetooth etc.

If you Click the Task View (or press the icon  ), the running applications will be display. We can switch between and close different applications.



# VI. Basic Operations

## 1.Sleep, Shut down and Restart



## **VII. FCC Statement**

Changes or modifications not expressly approved by the party responsible for compliance could void the user's authority to operate the equipment.

This equipment has been tested and found to comply with the limits for a Class B digital device, pursuant to Part 15 of the FCC Rules. These limits are designed to provide reasonable protection against harmful interference in a residential installation. This equipment generates uses and can radiate radio frequency energy and, if not installed and used in accordance with the instructions, may cause harmful interference to radio communications. However, there is no guarantee that interference will not occur in a particular installation. If this equipment does cause harmful interference to radio or television reception, which can be determined by turning the equipment off and on, the user is encouraged to try to correct the interference by one or more of the following measures:

- Reorient or relocate the receiving antenna.
- Increase the separation between the equipment and receiver.
- Connect the equipment into an outlet on a circuit different from that to which the receiver is connected.
- Consult the dealer or an experienced radio/TV technician for help

This device complies with part 15 of the FCC rules. Operation is subject to the following two conditions (1) this device may not cause harmful interference, and (2) this device must accept any interference received, including interference that may cause undesired operation.







